

## What is GEMELLI?

GEMELLI is a clinical research study being conducted to see if an investigational drug (SAR341402) works as well as a currently marketed insulin aspart (NovoLog®/NovoRapid®) in patients with Type 1 or Type 2 Diabetes Mellitus also using insulin glargine (Lantus®).

This study is open to all T1DM and T2DM patients who have taken a multiple daily injection regimen using insulin glargine for the past 6 months or Levemir® for 12 months and NovoLog®/NovoRapid® or insulin lispro for the last six months.

Patients enrolled in GEMELLI will receive all study-related medications (Lantus® with SAR341402 or Lantus® with NovoLog®/NovoRapid®), medical care and diabetes testing supplies for free, as well as diet and exercise counseling. Most importantly, a study doctor will closely monitor each patient.



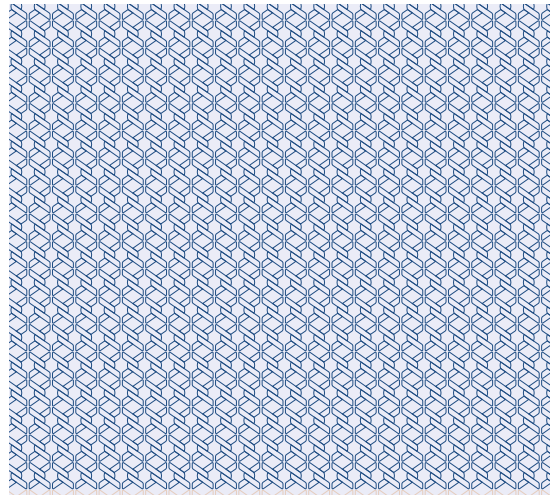
## You may be eligible for the GEMELLI study if you:

- Are at least 18 years of age
- Have been diagnosed with having T1DM or T2DM for at least 1 year

It's okay if you don't know if you qualify – the GEMELLI doctor can tell you if you do.

If you have diabetes and are taking other commercially available anti-diabetes medication, you may qualify.

For more information, or to find out if you qualify, please contact:



APPROVED: **Jul 12, 2017**  
COPERNICUS GROUP IRB

If you have diabetes (T1DM or T2DM) and are taking commercially available anti-diabetes medications, you may qualify....



A research study for people with diabetes

**GEMELLI**



## Diabetes

Diabetes is a chronic, lifelong condition that occurs when the body cannot produce enough and/or effectively use insulin. Insulin is a hormone produced by the pancreas that allows glucose from food to enter the body's cells where it is converted into energy needed by muscles and tissues to function. As a result, a person with diabetes does not absorb glucose properly, and glucose stays circulating in the blood (hyperglycemia) damaging tissues over time. This damage can lead to life-threatening health complications.

The Centers for Disease Control estimate that 9.3% of the population has diabetes. The American Diabetes Association (<https://professional.diabetes.org/content/fast-facts-data-and-statistics-about-diabetes>) confirmed the prevalence of diabetes in the US increased by 382% from 1988 to 2014.

## What are clinical research studies?

Clinical research studies are used to show that an experimental medication works and is safe. Qualified doctors run clinical research studies. They are responsible for the study-related care of the people who participate. Independent committees, made up of medical and non-medical people, also watch over clinical research studies to make sure that the people who participate are told everything they need to know and are protected.

## Why participate in a clinical research study?

Millions of people enroll in clinical research studies every year. The reasons why people choose to take part are as unique and varied as the people themselves. A clinical research study may offer the hope of choices. Some people enroll to help find a future treatment or to advance science. The reasons why you consider a clinical research study are yours alone. You should only decide once you have learned all about a clinical research study. If you decide to enroll in GEMELLI1, you will see the doctor regularly. You will also receive important counseling about a healthy diet and exercise.